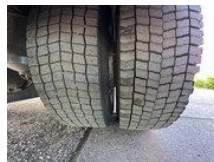




Volvo FM 9.260 / NL TRUCK / EURO 3 / 4X2 / AUTOMATIC / AIR CONDITIONING / CARGO PLATFORM + TAIL LIFT + SIDE DOOR / 19.5 TON

General features

Brand	Volvo
Model	FM 9.260
Subcategory	Box
Licence plate	BP-LG-32
Odometer reading	735.774km
Construction year	2004
Date of first registration	26-05-2004
Color	White
Condition	Used
General condition	Good
Fuel	Diesel
Emission class	Euro 3
Reference	AT1022



Characteristics

Empty weight	9.780kg
Load capacity	9.820kg
GVW	19.500kg
Length	1.004cm
Width	255cm
Cabin	Sleeper cabin

Volvo FM 9.260 / NL TRUCK / EURO 3 / 4X2 / AUTOMATIC / AIR CONDITIONING / CARGO PLATFORM + TAIL LIFT + SIDE DOOR / 19.5 TON

Technical specifications

Number of axes	2
Axis configuration	4x2
Transmission	Automatic
Engine output	259hp

Description

= Additional options and accessories = - Differential blocking - Electric mirrors - Engine Brake - Front View Camera - Particulate filter - Radio Bluetooth - roof hatch - Seat heating - side door cargo bed - sleeping cabin - Sper - Tailgate = Remarks = Tailgate
Plateau length: 175 cm Structure Volume: 49 m3 Material: Aluminium = More information = Damages: none

Accessories

- Bluetooth
- Onboard Computer
- Anti-lock braking system
- Reversing camera
- Air conditioning
- Aluminium fuel tank
- Leaf spring suspension
- Cruise control
- Roof spoiler
- Electrically operated windows
- Toolbox
- Air suspension
- Particulate filter
- Sleeper cab
- Spotlights
- Visor
- Tail lift
- Parkassist
- Disc brakes
- Automatic