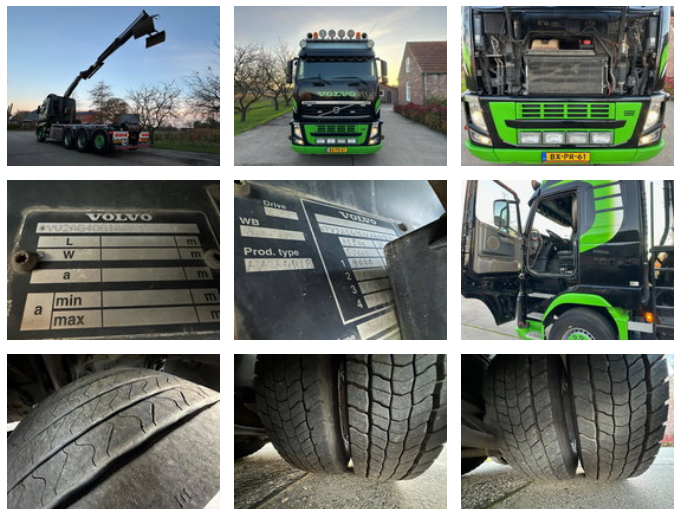


Volvo FH 540 8X4 8X4 / NL TRUCK / EURO5 / CRANE+ROTATOR+HOOK

General features

Brand	Volvo
Model	FH 540
Subcategory	Crane truck
Licence plate	BX-PR-61
Odometer reading	956.609km
Construction year	2010
Date of first registration	17-06-2010
Color	Black
Condition	Used
General condition	Good
Fuel	Diesel
Emission class	Euro 5
Reference	AT1007-A



Characteristics

Empty weight	16.700kg
Load capacity	18.800kg
GVW	35.500kg
Length	965cm
Width	253cm
Cabin	Sleeper cabin

Cylinder contents

12.780cc

Volvo FH 540 8X4 8X4 / NL TRUCK / EURO5 / CRANE+ROTATOR+HOOK

Technical specifications

Number of axes	4
Axis configuration	8x4
Transmission	Automatic
Engine output	550hp

Description

= Additional options and accessories = - Beacon(s) - Differential blocking - Electrically adjustable seats - Electric mirrors - Lift Axle - Particulate filter - Radio - Radio Bluetooth - Seat heating - sleeping cabin - Sper - Spoiler set - stationary air conditioner - Steering Axle - Work lamp(s) = Remarks = Crane Squeeze Box: ✓ Capacity kilo: 6200 kg PALFINGER PK15500 2 x extendable Rotator with grab bucket VDL right-angle system New steered rear axle 2023 Had major maintenance on the crane = More information = Damages: none

Accessories

- Trailer coupling
- Bluetooth
- Onboard Computer
- ESP
- Heated Mirrors
- Towbar
- Anti-lock braking system
- Reversing camera
- Air conditioning
- Aluminium fuel tank
- Leaf spring suspension
- Central locking
- Cruise control
- Roof spoiler
- Electrically operated windows
- Air horn
- Air suspension
- Radio/CD player
- Particulate filter
- Side skirts
- Sleeper cab
- Stability control
- Vehicle heater
- Coupling
- Heavy duty engine brake
- Visor

- Leather interior
- Parkassist
- Disc brakes
- EBS
- Heater
- Alarm
- ASR (Anti-Slip Regulation/Traction Control)
- Automatic