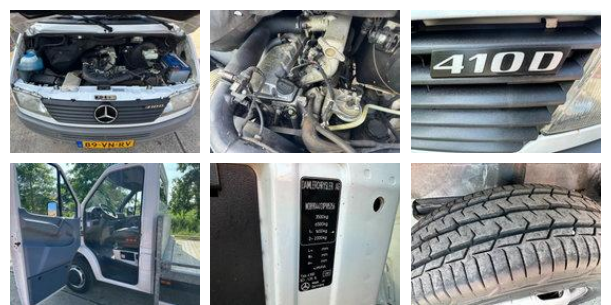


Mercedes-Benz Sprinter 410 D / NL BUS / CAR TRANSPORTER / ONLY 250,000KM NAP / EURO 3 / TOP CONDITION / WITH RAMPS / MANUAL TRANSMISSION /

General characteristics

Brand	Mercedes-Benz
Model	Sprinter
Subcategory	Loading ramp - car transporter
License plate	89-VN-RV
Meter reading	250.889km
Year of construction	2000
Date of first registration	17-02-2000
Colour	Wit
Condition	Used
General state	Good
Fuel	Diesel
Emission class	Euro 3
Reference	AT1044



Properties

Single weight	2.490kg
Load capacity	1.110kg
GVW	3.500kg
Width	210cm
Cabin	Nee
Number of doors	2
Serial number	WDB9044131P985256
Cylinder capacity	2.900cc

Technical specifications

Number of axes	2
Axis configuration	4x2
Transmission	Manual transmission
Assets	101hp

Description

= Additional options and accessories = - Blower - Radio Bluetooth - Towbar 3500kg = Remarks = Beautiful Mercedes-Benz Sprinter 410 D from 2000 with only 250,000 km no damage, no rust. galvanized structure. Surface-mounted dimensions: L 540cm W 205cm Ramp dimensions: L 290cm W 40cm = More information = Damages: none

Accessories

- Bluetooth
- Anti-lock braking system
- Leaf spring suspension
- Toolbox
- Disc brakes