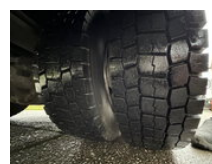
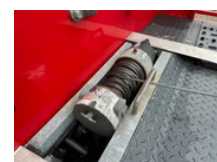
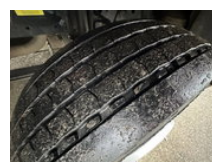
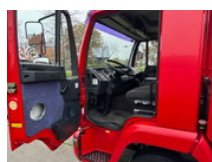


# MAN L20 / NL TRUCK / EURO3 / 111,000km / EL. WINCH / 7.5t /

## General characteristics

Brand	MAN
Model	L20
Subcategory	Car transporter
License plate	BN-NZ-84
Meter reading	111.175km
Year of construction	2003
Date of first registration	13-03-2003
Colour	Red
Condition	Used
General state	Good
Fuel	Diesel
Emission class	Euro 3
Reference	AT1008



## Properties

Single weight	4.551kg
Load capacity	3.039kg
GVW	7.490kg
Length	845cm
Width	236cm

Cabin	Nee
Number of doors	2
Serial number	WMAL20ZZZ3Y112173
Cylinder capacity	4.580cc

# MAN L20 / NL TRUCK / EURO3 / 111,000km / EL. WINCH / 7.5t /

## Technical specifications

Number of axes	2
Axis configuration	4x2
Transmission	Manual transmission
Assets	140hp

## Description

= Additional options and accessories = - Particulate filter - Seat heating - Towbar 3500kg = Remarks = Beautiful MAN L20 car transporter, EURO3 with only 111,000 km, original Dutch, 3,000 kg payload. Analog tachograph, reversing camera, cruise control, and heated seats always parked indoors data structure: TIJHOF with electric winch total load bed length 670cm width 230cm Straight length 440cm diagonal length 230cm Loading floor height 90cm back height 65cm

## Accessories

- Anti-lock braking system
- Reversing camera
- Aluminium fuel tank
- Leaf spring suspension
- Cruise control
- Toolbox
- Air suspension
- Radio/CD player
- Particulate filter
- Side skirts
- Heavy duty engine brake
- Parkassist
- Disc brakes