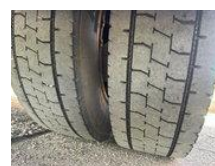


MAN 33 L33 8-163 / NL TRUCK / EURO 2 / 7.5T / ALUMINUM LOADING BARS / MANUAL /

General features

Brand	MAN
Model	33
Subcategory	Car transporter
Licence plate	BJ-JH-59
Odometer reading	438.088km
Construction year	2000
Date of first registration	10-07-2000
Color	White
Condition	Used
General condition	Good
Fuel	Diesel
Emission class	Euro 2
Reference	AT1023



Characteristics

Empty weight	4.220kg
Load capacity	3.370kg
GVW	7.490kg
Length	734cm
Width	228cm

Cabin

No

MAN 33 L33 8-163 / NL TRUCK / EURO 2 / 7.5T / ALUMINUM LOADING BARS / MANUAL /

Technical specifications

Number of axes	2
Axis configuration	4x2
Transmission	Manual
Engine output	154hp

Description

= Additional options and accessories = - Engine Brake - Radio - Radio Bluetooth - roof hatch - Seat heating - Towbar 3500kg =
Remarks = cargo bed dimensions: 540x225 Loading floor height 90cm, hardwood floor with lashing eyes. dimensions of aluminium
loading ramps: 250x40 = More information = Damages: none

Accessories

- Trailer coupling
- Bluetooth
- Towbar
- Leaf spring suspension
- Cruise control
- Electrically operated windows
- Toolbox
- Air suspension
- Navigation system
- Spare wheel
- Side skirts
- Coupling
- Heavy duty engine brake
- Visor
- Disc brakes